



CHONNAM NATIONAL UNIVERSITY (CNU)

2025 AI SUMMER SCHOOL

AUGUST 4-17, 2025



History

1909

Gwangju Agricultural & Forestry School established.

1952

Chonnam National University Founded.

* In South Korea, there are a total of 10 Flagship Korean National Universities.





5 Campuses

- 19 Colleges
- 12 Graduate Schools



Faculty & staff

- 1,192 Professors (Full-time)
- 2,821 Staffs



31,037 Students

- 25,393 Undergraduates
- 5,644 Graduates



1,217 Foreign Students

(2024. 4. 1.)



ABOUT GWANGJU

| Gwangju



1,408,422
Population
(2024.2.)



A city of Culture & Art,
Peace & Human Rights,
Korean Gastronomy



Sendai
Sister city
In Japan

- The 6th largest city in South Korea.
- Gwangju has played a significant roles in the history of Korea's democracy and human rights movements.
- Known for its rich culture and art, with exhibitions and performances taking place to experience Korean culture.

From Seoul



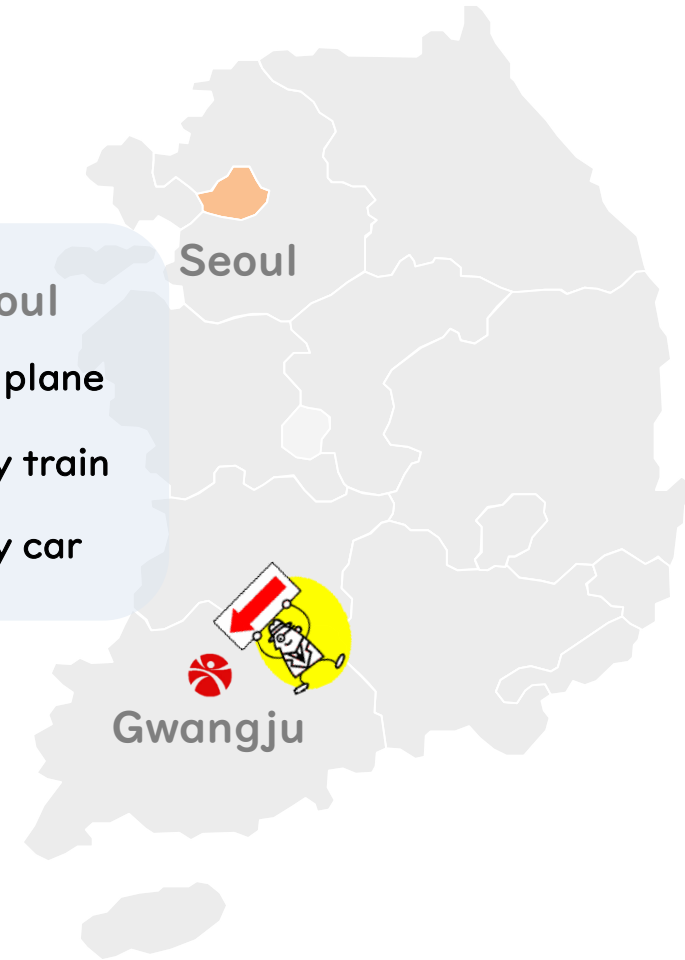
1 Hour by plane



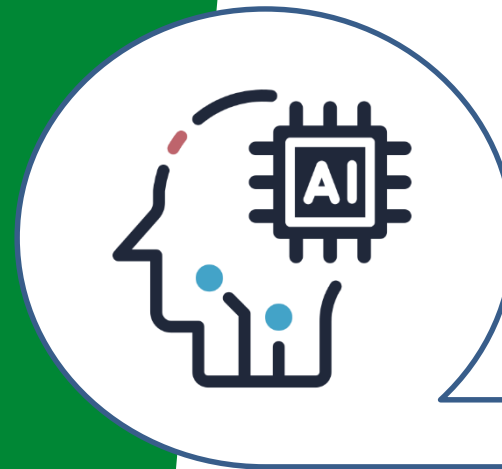
2 hours by train



3 hours by car



2025 CNU AI SUMMER SCHOOL



2025 CNU AI SUMMER SCHOOL



● Program Overview

- Period: August 4 (Mon) – 17 (Sun), 2025 (13 nights, 14 days)
- Participants Capacity: 20
- Program Content:
 - 1) Orientation, Welcome Party, Closing Ceremony
 - 2) Lectures (15 hours)
 - 3) Experiments and Practical Training (18 hours)
 - 4) Korean Language Classes (6 hours)
 - 5) Cultural Experiences
 - 6) Company Visits

PROGRAM FEE & SCHOLARSHIP

Thanks to scholarships provided by the Korean Government,
this program is available at **no cost** to selected Japanese participants.

● Total Program Fee : ~~560,520¥~~ ⇒ **0¥** (For Selected Japanese Participants)

● What's Included:

- 1 Tuition: AI Course (1 Credit), Korean Language Classes, Mentoring Program
- 2 Round-Trip Airfare, On-Campus Accommodations, Meals
- 3 Korean Traditional Culture Experience (Seoul Trip, Hanbok Experience, Bibimbap Making)
- 4 Company Visits (KIA Motors, Korea Electric Power Corporation)

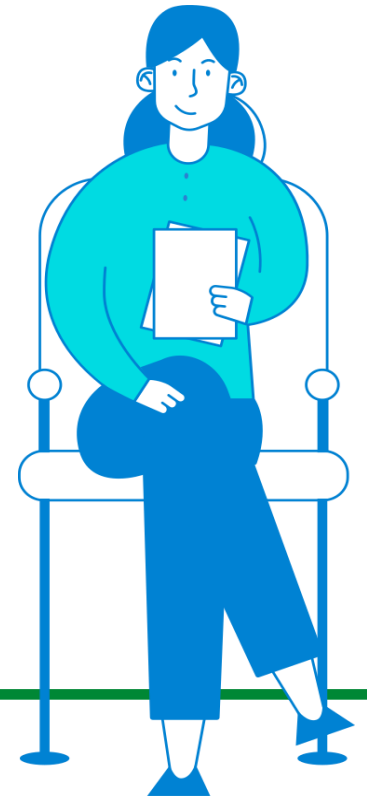


PROGRAM SCHEDULE

Day 1 8. 4. Arrival Day Welcome Party	Day 2 8. 5. Campus Tour Orientation	Day 3 8. 6. AI Lecture Mentoring Language Class	Day 4 8. 7. AI Lecture Hanbok Experience	Day 5 8. 8. AI Lecture Mentoring Language Class	Day 6 8. 9. Bibimbap Cooking Class Glamping	Day 7 8. 10. Rest Day
Day 8 8. 11. Company Visit	Day 9 8. 12. AI Lecture Mentoring Language Class	Day 10 8. 13. AI Lecture Mentoring	Day 11 8. 14. Mentoring Company Visit	Day 12 8. 15. Conference Closing Ceremony	Day 13 8. 16. Gyeongbokgung Lotte World	Day 14 8. 10. Leaving Day



Details



HOW TO APPLY

| Schedule

①

The home university
selects the students
to be recommended.

②

The designated
coordinator submits
the nomination
online.

③

The nominated
student complete
their applications
online.



HOW TO APPLY

| Eligibility

① Engineering undergraduates

Undergraduates with basic knowledge of engineering.

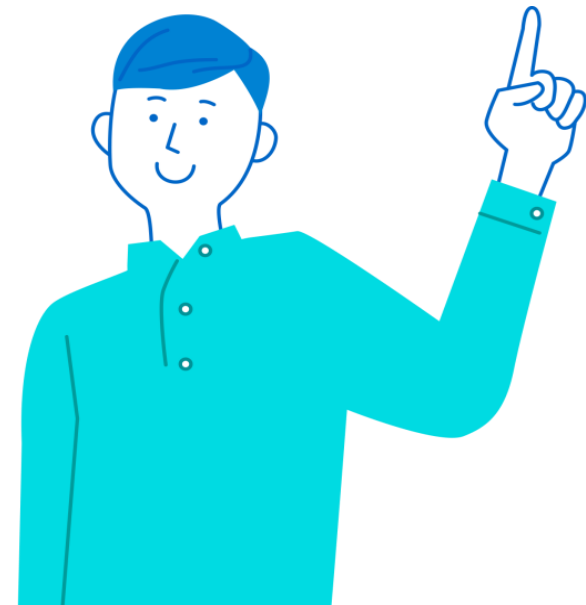
※ This is a beginner-friendly course, so no prior knowledge of AI is required.

② recommended by university

(designated with a recommendation quota by CNU).

③ Possesses beginner to intermediate English proficiency requirements.

※ Submission of an English proficiency certificate is not required

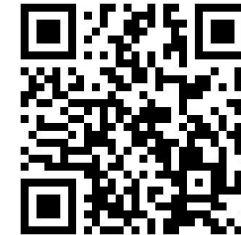


HOW TO APPLY

Nomination (Coordinator)

- Please complete the nomination of the eligible students via the following link by **Friday, April 25.**
<https://forms.gle/iFCFImntDddSCLTUA>

nomination
link
CLICK



Online Application (Student)

- Please complete the online application via the following link by **Friday, May 9.**
<https://forms.gle/vzJva2IkuV8VVGs5>

application
Link
CLICK



ON CAMPUS ACCOMMODATION

- Dormitory on campus (15-story building)
- Twin-bed share studio type (with toilet and shower)
- Room amenities: air conditioner, desk, chair, closet, refrigerator
- Convenience facilities: laundry, lounge, convenience store (CU), café, etc.



Comfortable
and
Convenient!



HOW TO CONTACT

- E-mail: inbound2@jnu.ac.kr
- Phone: +(82)-62-530-1278
- Address:
Office of International Affairs,
Chonnam National University, G&R Hub 214,
77 Yongbong-ro, Buk-gu, Gwangju 61186, Korea